

# Breast Cancer in Younger Women

Sarah Jacobs, B.S., R.T.(R)(M)(CT)(ARRT)  
Breast Imaging Consultant, Mammography Educators



MAMMOGRAPHY  
EDUCATORS

© 2026 Mammography Educators

1

## Holly's Story



MAMMOGRAPHY  
EDUCATORS

2

## How Young is "Too Young"?

- Most medical journals and scientific papers regarding breast cancer in younger women refer to women between the ages of 15-39; others may refer to up to age 45.
- Information regarding the term "young women" is subjective.



MAMMOGRAPHY  
EDUCATORS

3

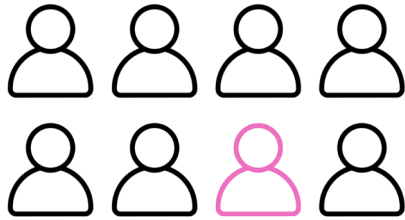
## Breast Cancer in Younger Women is Becoming More Common



MAMMOGRAPHY  
EDUCATORS

4

## Statistics: Breast Cancer in Young Women



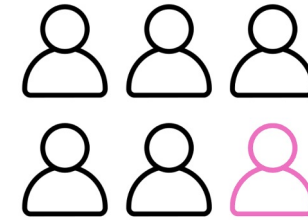
1 in 8 women will be diagnosed with breast cancer in their lifetime.



MAMMOGRAPHY  
EDUCATORS

5

## Statistics: Breast Cancer in Young Women



1 in 6 women aged 40-49 will be diagnosed with breast cancer.



MAMMOGRAPHY  
EDUCATORS

6

## Statistics: Breast Cancer in Young Women

- Each year, approximately 85,980 men and women ages 15 to 39 are diagnosed with cancer in the US.
- In this age group (15-39), breast cancer is the most common cancer diagnosed.



MAMMOGRAPHY  
EDUCATORS

7

## Statistics: Breast Cancer in Young Women

- About 9% of all new cases of breast cancer occur in women **under 45**.
- Those **under 35** at the time of their original breast cancer diagnosis, face a higher risk of breast cancer recurrence.



MAMMOGRAPHY  
EDUCATORS

8

## Statistics: Breast Cancer in Young Women

- In the **US** between 2010 and 2019:
  - Breast cancer among people aged 30 to 39 increased 19.4%
  - Breast cancer among people aged 20 to 29 increased 5.3%
- In **Canada**:
  - From 1984 to 2019, there was a relative increase of 18% in breast cancer found in women between the ages of 30 to 39



MAMMOGRAPHY  
EDUCATORS

9

## Statistics: Breast Cancer in Young Women

- Compared to older women, young women generally face more aggressive cancers and lower survival rates.
- Breast cancer found in a younger woman is more likely to be hereditary than breast cancer found in older women.
- Nearly 80% of young adults discover a sign or symptom of breast cancer themselves.



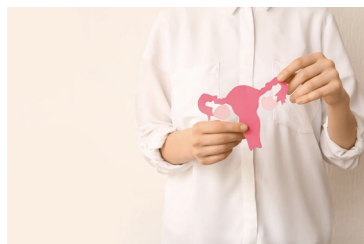
MAMMOGRAPHY  
EDUCATORS

10

## Factors Contributing to Risk

### Greatest risks:

- Sex (female)
  - Reproductive hormones
  - Decreasing average age of menstruation (US: 11; Canada: 12)



MAMMOGRAPHY  
EDUCATORS

11

## Factors Contributing to Risk

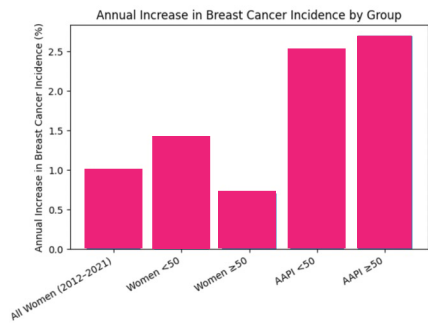
- Ethnicity and overall breast cancer incidence
- Age at first pregnancy
- Genetic mutations



MAMMOGRAPHY  
EDUCATORS

12

## Ethnicity and Overall Breast Cancer Incidence



MAMMOGRAPHY  
EDUCATORS

Source: American Cancer Society, 2024-2025

13

## Ethnicity and Overall Breast Cancer Incidence

- Incidence rates of breast cancer among non-Hispanic white patients are just slightly higher than non-Hispanic black patients; overall similar.
- Black women have 40% higher breast cancer death rates than white women despite lower incidence rates.

Race and ethnicity	Lifetime risk of breast cancer
Non-Hispanic White	14%
Non-Hispanic Black	12%

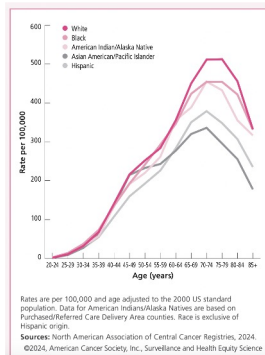


MAMMOGRAPHY  
EDUCATORS

Source: American Cancer Society, 2024-2025

14

## Ethnicity and Breast Cancer Incidence



MAMMOGRAPHY  
EDUCATORS

Source: American Cancer Society, 2024-2025

15

## Ethnicity and Breast Cancer Mortality

- In the US alone, there is estimated to be over 42,000 breast cancer related deaths (all ethnic backgrounds).
- Among women under 50, the disparity is even greater while young women have a higher incidence of aggressive cancers, young black women have double the mortality rate of young white women.



MAMMOGRAPHY  
EDUCATORS

16

## Ethnicity and Breast Cancer Mortality

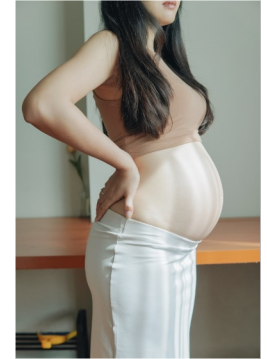
Black women have a higher risk of triple-negative breast cancer, more than any other racial or ethnic group.



17

## Breast Cancer and Pregnancy

- Pregnancy for the first time at age 35 or later.
- More women are delaying their first pregnancy.
- Breast cancer occurs 1 in every 3,000 pregnancies.



Source: National Cancer Institute

18

## Breast Cancer and Pregnancy

- Breast cancer is the most common form of cancer in women who are pregnant or have recently given birth.
- Estimated 30% or more of breast cancer in young women is diagnosed in the few years after a woman has had a baby.



19

## Genetic Mutations

- If the patient has BRCA1 or BRCA2 genetic mutations, or had close relatives with these genetic mutations, even if patient hasn't been tested
- Other genetic mutations: TP53, PTEN, STK11, PALB2 and CDHI, other TBD



20

## Other Factors Contributing to Risk

- Immediate family member diagnosed with breast cancer before age 45
- When patient has more than one close relative diagnosed with breast cancer
- Male relative diagnosed with breast cancer



MAMMOGRAPHY  
EDUCATORS

21

## Other Factors Contributing to Risk

- Patient has a close relative diagnosed with ovarian cancer
- Ashkenazi Jewish heritage
- Radiation therapy to the breast or chest during childhood or early adulthood



MAMMOGRAPHY  
EDUCATORS

22

## Other Factors Contributing to Risk

- Personal history of breast cancer or certain other breast abnormalities: LCIS, DCIS, ADH, or ALH
- Li-Fraumeni syndrome, Cowden syndrome, or Bannayan-Riley-Ruvalcaba syndrome, or have had a first-degree relatives with one of these syndromes
- Dense breast tissue



MAMMOGRAPHY  
EDUCATORS

23

## Dense Breast Tissue



MAMMOGRAPHY  
EDUCATORS

24

## Dense Breast Tissue

More and more patients are learning about dense breast tissue and they may already know that they have it. However, they don't often know exactly what it is or what it means in terms of breast cancer screening.



MAMMOGRAPHY  
EDUCATORS

25

## Dense Breast Tissue

Talk to your patients about breast density – it is often inherited, but other factors can influence it.



Hormone therapy and a low BMI

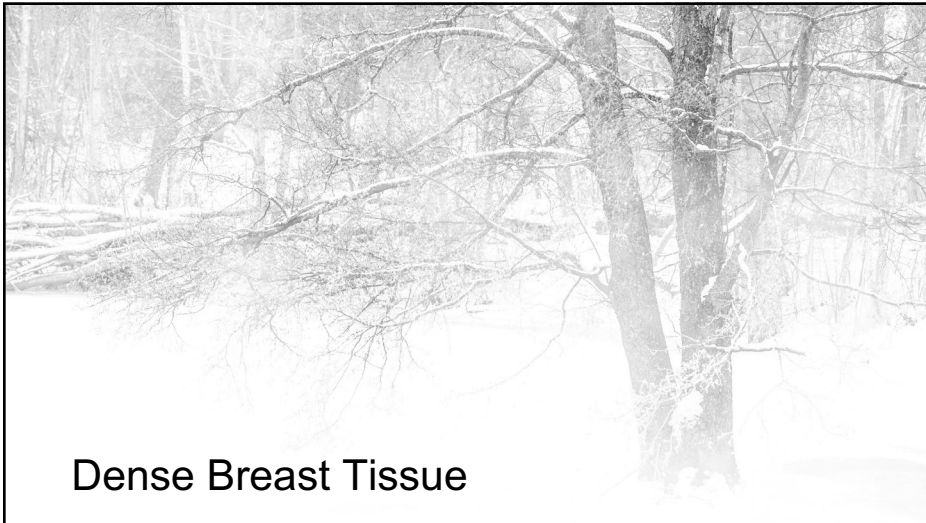


Increased age and having children



MAMMOGRAPHY  
EDUCATORS

26



Dense Breast Tissue

27



MAMMOGRAPHY  
EDUCATORS

28

## Breast Cancer in 2026

### Non-invasive breast cancer:

- DCIS – 60, 730 new cases
- LCIS – women have 7-12 times higher risk of developing invasive cancer in either breast



MAMMOGRAPHY  
EDUCATORS

29

## Breast Cancer in 2026

### Invasive Breast Cancer:

- 321,910 new cases expected in 2026 in the US
- IDC Most common type of breast cancer
- 8 out of 10 breast cancers are IDC

### Invasive Lobular Carcinoma (ILC):

- 2nd most diagnosed cancer, after IDC, representing 10-15% of invasive breast cancer



MAMMOGRAPHY  
EDUCATORS

30

## Breast Cancer in 2025

- Triple Negative Breast Cancer (TNBC)
- Metastatic Breast Cancer

**METASTATIC BREAST CANCER**  
*The cancer has started to spread to other parts of the body.*



MAMMOGRAPHY  
EDUCATORS

Source: National Breast Cancer Organization

31

## Breast Cancer Risk Factors We CAN Control

- Maintain a healthy weight
- Exercise
- Limit alcohol
- Plant-forward diet
- First child before age 30
- Breastfeed
- Minimize Toxicity



MAMMOGRAPHY  
EDUCATORS

32

## Breast Cancer Risk Factors We CAN'T Control

- Being female
- Getting older
- Family history
- Genetic mutations
- Dense breast tissue
- Personal history of breast cancer, or ADH, LCIS
- Chest wall radiation for childhood cancers



MAMMOGRAPHY  
EDUCATORS

33

## Understanding Population-Based Risk and Individual-Based Risk

- Population-Based Risk:
  - US Preventative Services Task Force (USPSTF)
  - American Cancer Society (ACS)
- Individual-Based Risk:
  - Gail Model
  - Tyrer-Cuzick
  - Genetic Testing



MAMMOGRAPHY  
EDUCATORS

34

## What is "High Risk"?

Lifetime risk of breast cancer of 20% - 25% or greater.



MAMMOGRAPHY  
EDUCATORS

35

## Assessing Breast Cancer Risk

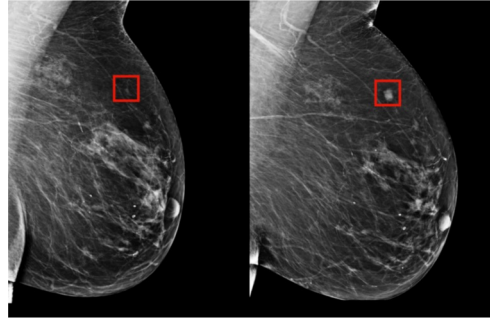


MAMMOGRAPHY  
EDUCATORS

36

## Assessing Breast Cancer Risk

- EMR
- Risk Assessment
- AI



37

## ACR Recommendations on Risk Assessment

Updated May 3, 2023:

***“All women especially Black and Ashkenazi Jewish women who are considered high risk, should have a breast cancer risk assessment by the of age 25 to determine if they need to start regular screening earlier than age 40.”***



Source: American College of Radiology

38



39

## Current Screening Guidelines

Group	Start/Frequency	End
ACR & SBI	Risk Assessment by 25 / screening annually at age 40	No end, as long as in good health
NCCN	Risk Assessment by 25 / screening annually at age 40	No end, as long as in good health
ACOG	Start age 40 / screening 1-2 years	Until at least age 75
ACS	Start btwn 40-44, annual option, 45-54 annually, 55+ screen 1-2 years	Healthy w/ life expectancy 10+ yrs
USPST	40 / screen every 2 years	74



40

## Current Screening Guidelines

Annual screen mammograms at age 40:

- American College of Radiology (ACR)
- Society of Breast Imaging (SBI)
- Canadian Association of Radiologists (CAR)



MAMMOGRAPHY  
EDUCATORS

41

## Current Screening Guidelines

May 2023: United States Preventive Services Task Force (USPSTF) updated recommendations to screening mammography at age 40, rather than 50.

- USPSTF has not amended current recommendation for screening frequency (yet)
- Current recommendation is screening every 2 years



MAMMOGRAPHY  
EDUCATORS

42

## Current Screening Guidelines

- Based on risk factors such as personal history, breast density and others.
- Your patient may benefit from starting screening mammography, US, MRI, etc. earlier than age 40!



MAMMOGRAPHY  
EDUCATORS

43

## Imaging Options for Screening and/or Diagnostic Patients



MAMMOGRAPHY  
EDUCATORS

44

### 3 Commonly Used Risk Assessment Models

- Gail
- Tyrer-Cuzick
- Breast Cancer Surveillance Consortium (BCSC)



### Gail Model

- Uses personal medical and reproductive history
- History of first-degree relatives
- Able to estimate the risk of developing invasive breast cancer over the next 5 years and up to age 90



### Tyrer-Cuzick

- Uses personal and family history to determine risk
- Results display 10-year risk and lifetime risk scores
- Risk scores:
  - Average (less than 15%)
  - Intermediate (15-19%)
  - High (over 20%)



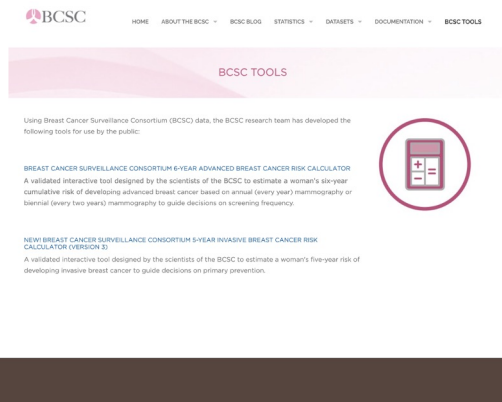
### Risk Models

Model	Gail	Claus/Ford*	Tyrer-Cuzick/manual
	Age	Age	Age
	Reproductive	Reproductive	Reproductive
	Age menarche	None	Age menarche
	Age first live birth		Age menopause
			Age first live birth
	Personal history	Personal history	Personal history
	biopsy	None	Biopsy
	ADH <sup>b</sup>		Atypical hyperplasia
			LCIS
	Family history	Family history	Family history
	First degree relative	First degree relative	First degree relative
		Second degree relative	Second degree relative
		Age of onset	Age of onset
		Ovarian cancer (Ford)	Ovarian cancer
		Male breast cancer (Ford)	Male breast cancer (Manual)
	Lifestyle	Lifestyle	Lifestyle
	None	None	BMF (Tyrer-Cuzick)



## Breast Cancer Surveillance Consortium (BCSC)

- Offers 5 and 6 year risk calculations
- Not effective in measuring risk of women under 35 or with a previous dx of breast cancer



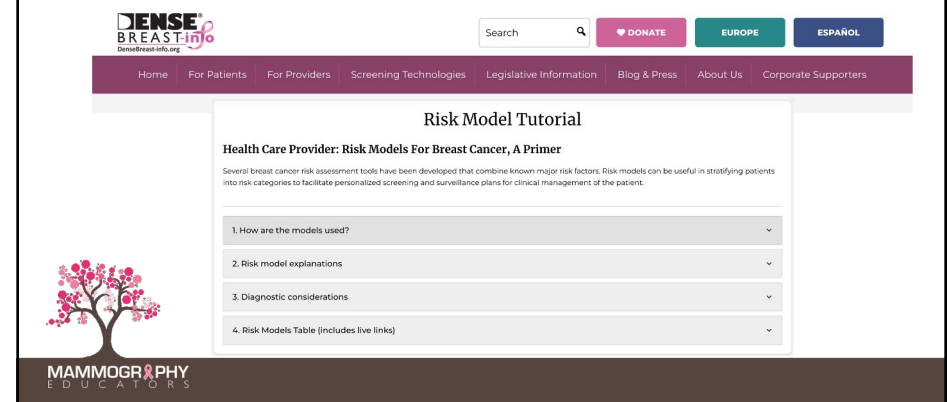
Using Breast Cancer Surveillance Consortium (BCSC) data, the BCSC research team has developed the following tools for use by the public:

**BREAST CANCER SURVEILLANCE CONSORTIUM 6-YEAR ADVANCED BREAST CANCER RISK CALCULATOR**  
A validated interactive tool designed by the scientists of the BCSC to estimate a woman's six-year cumulative risk of developing advanced breast cancer based on annual (every year) mammography or biennial (every two years) mammography to guide decisions on screening frequency.

**NEW BREAST CANCER SURVEILLANCE CONSORTIUM 5-YEAR INVASIVE BREAST CANCER RISK CALCULATOR (VERSION 2)**  
A validated interactive tool designed by the scientists of the BCSC to estimate a woman's five-year risk of developing invasive breast cancer to guide decisions on primary prevention.

49

## Risk Models



**DENSE BREAST info**  
DenseBreastInfo.org

Search

DONATE EUROPE ESPAÑOL

Home For Patients For Providers Screening Technologies Legislative Information Blog & Press About Us Corporate Supporters

### Risk Model Tutorial

#### Health Care Provider: Risk Models For Breast Cancer, A Primer

Several breast cancer risk assessment tools have been developed that combine known major risk factors. Risk models can be useful in stratifying patients into risk categories to facilitate personalized screening and surveillance plans for clinical management of the patient.

1. How are the models used?
2. Risk model explanations
3. Diagnostic considerations
4. Risk Models Table (includes live links)

50

## Risk Reporting in Electronic Medical Record (EMR)

- Not a 100% accurate method of determining risk
- Ensures accuracy in risk-related history questions
- Ensures accuracy in documentation
- Inaccuracies may contribute to erroneous risk rates



51

## Limited Research and Underrepresentation

- Younger women remain underrepresented in many research studies
- Breast cancer occurs at a much lower rate among young adults than in our older counterparts



52

## How Can You Help?

- Get educated:
  - Know and understand how recommendations and guidelines have changed
  - Ensure your facility remains up to date in reporting requirements
- Be an advocate:
  - Talk to your family, friends, patients and colleagues about breast cancer risk factors, signs and symptoms



MAMMOGRAPHY  
EDUCATORS

53

## Advocacy

Mammography Technologists have a responsibility to their patients and physicians:

- Responsibility that shouldn't be taken lightly
- Relationship w/ patients is built upon trust in such a sensitive exam
- Be an advocate for your patients, friends, and family



MAMMOGRAPHY  
EDUCATORS

54

## How Can You Help?

- Bust the myths!
- Know your facility's resources
- Support organizations

Journal of Breast Imaging 2025, Vol. 7, No. 4, 286-294  
doi:10.1093/jbiri/ibk030  
Perspectives  
Received: March 26, 2025; Editorial Decision: April 17, 2025  
Published Online: July 26, 2025

Perspectives

**Correcting Decades of Misinformation About Breast Cancer Screening: An Open Letter to Women and Those Who Advise Them About Screening for Breast Cancer**

Daniel B. Kopans, MD<sup>1,2</sup>

<sup>1</sup>Harvard Medical School, Boston, MA, USA

<sup>2</sup>Corresponding author: Daniel B. Kopans ([dkopans@verizon.net](mailto:dkopans@verizon.net))



MAMMOGRAPHY  
EDUCATORS

55

## Myth vs. Fact

If you don't tell your patient, they may never hear the facts... before it's too late:

- Discuss screening guidelines
- Talk about risk assessment, what it means to have dense breasts, and the importance of self Breast Exams (SBE)
- No family history does not mean your patient isn't at risk
- 85-90% of patients with breast cancer diagnosis have no known family history



MAMMOGRAPHY  
EDUCATORS

56

## Educational Materials

- Educate yourself on what materials your facility offers or needs
- Create educational content in multiple patient languages
- Education on breast density
- Ensure your facility offers information on Risk Assessment



57

## Support Organizations for Young Adults

- Supportorgs.cancer.gov
- StupidCancer.org
- Young Survival Coalition
- Cactus Cancer Society
- Living Beyond Breast Cancer
- Social Media Groups
- Annual Conferences, retreats and YA recreational activities



58

## Additional Resources

- Commercial Laboratories: Myriad, Invitae, Natera, Quest Diagnostics, Foundation of Medicine
- NSGC Directory: National Society of Genetic Counselors
- FORCE Helpline: 866-288-RISK (ext. 704) Facing Our Risk of Cancer Empowered
- City of Hope
- NCI-Designated Cancer Centers
- Academic Medical Centers

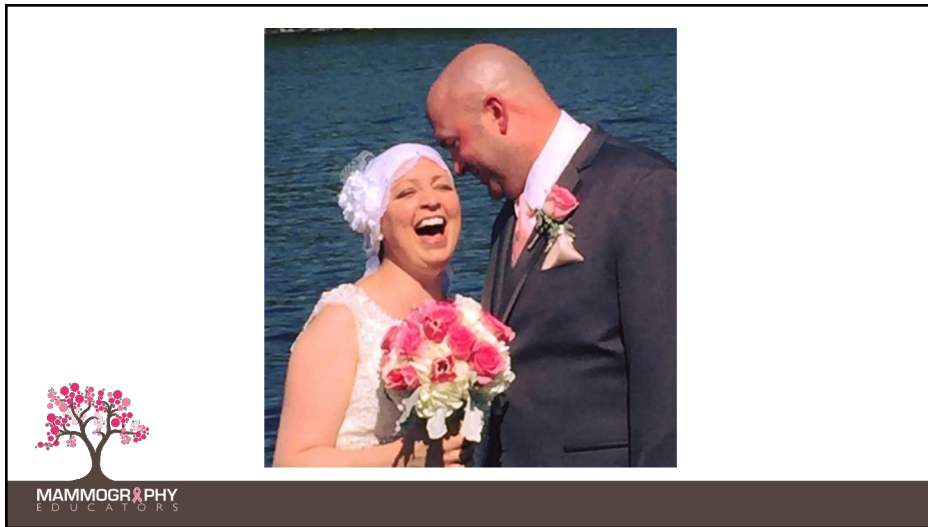


59

## So How Young is “Too Young”?




60



61

## Key Takeaways

- Don't assume low risk, under age 40.
- Encourage patients to talk with their doctor.
- Promote self-knowledge and early recognition of changes.



MAMMOGRAPHY EDUCATORS

62



63


## Thank You!

**Services we offer, include:**

- Onsite Positioning Training
- Assistance with Accreditation & Inspection
- Live Webinars and Conferences
- On-Demand Continuing Education

For questions or more information:

619-663-8269  
[mammographyeducators.com](http://mammographyeducators.com)  
[info@mammographyeducators.com](mailto:info@mammographyeducators.com)



MAMMOGRAPHY EDUCATORS

64

## References

- Ann H. Partridge et al., (2010). "Breast Cancer in Younger Women." *Diseases of the Breast* (4th ed.), In J. Harris (Ed.): 1073-1083.)
- Archie Bleyer et al., (2008). "The distinctive biology of cancer in adolescents and young adults." *Nature Reviews Cancer* 8, no. 4. 288-298.
- AYA Cancer Network. (2021). Adolescent and Young Adult (AYA) Cancer Incidence and Survival in Aotearoa (2008-2017). In AYA Cancer Network. [https://www.avacancernetwork.org.nz/wp-content/uploads/2021/07/4000950-AYA-Snapshot-Incidence-and-Survival\\_Final-pages-low-res.pdf](https://www.avacancernetwork.org.nz/wp-content/uploads/2021/07/4000950-AYA-Snapshot-Incidence-and-Survival_Final-pages-low-res.pdf)
- Carey K. Anders et al., (2008) "Young Age at Diagnosis Correlates With Worse Prognosis and Defines a Subset of Breast Cancers With Shared Patterns of Gene Expression." *Journal of Clinical Oncology* 26, no. 10: 3324-3330.
- Carey K. Anders et al., (2011). "Breast Carcinomas Arising at a Young Age: Unique Biology or a Surrogate for Aggressive Intrinsic Subtypes?." *Journal of Clinical Oncology* 29, no. 1: e18-e20. <http://jco.ascopubs.org/content/29/1/e18.full>
- Datli, A. (2020, April 6). 62-year-old hospital worker survives COVID-19 alone in her house. Wusa9.com; WUSA. <https://www.wusa9.com/article/news/health/coronavirus/62-year-old-hospital-worker-survives-covid-19-alone-in-her-house/65-d737f61b-9608-47d-92b1-4479b4a04dad>
- Eryn B. Callihan, et al., (2013). "Postpartum diagnosis demonstrates a high risk for metastasis and merits an expanded definition of pregnancy-associated breast cancer." *Breast Cancer Res. Treat.* 138. <https://www.komen.org/breast-cancer/risk-factor/race-ethnicity/>



MAMMOGRAPHY  
EDUCATORS

## References

- Koh, B., Jun, D., Cheng Han Ng, Clarissa Elysia Fu, Wen Hui Lim, Rebecca Wenling Zeng, Jie Ning Yong, Jia Hong Koh, Syn, N., Wang, M., Kam Wijarnprecha, Liu, K., Choon Seng Chong, Muthiah, M., Luu, H. N., Vogel, A., Singh, S., Khay Guan Yeoh, Rohit Loomba, & Huang, D. Q. (2023). Patterns in Cancer Incidence Among People Younger Than 50 Years in the US, 2010 to 2019. *JAMA Network Open*, 6(8), e2328171–e2328171. <https://doi.org/10.1001/jamanetworkopen.2023.28171>
- Murthy, V. H. (2020). *Together: The Healing Power Of Human Connection in a Sometimes Lonely World*. New York, NY: Harper Wave, an imprint of HarperCollins. Murthy, V. H. (2020)
- Ruddy, K. et al... (2009). "Presentation of breast cancer in young women." *Journal of Clinical Oncology* 27:15S
- Susan G. Komen. (2022). Breast Cancer Incidence in U.S. Women by Race and Ethnicity, 2018-2022 [Scientific Figure]. In Susan G. Komen®. <https://www.komen.org/breast-cancer/risk-factor/race-ethnicity/>
- The American Cancer Society medical and editorial content team. (2021, October 27). Treating Breast Cancer During Pregnancy. [www.cancer.org](https://www.cancer.org/cancer/tvsa/breast-cancer/treatment/treating-breast-cancer-during-pregnancy.html). <https://www.cancer.org/cancer/tvsa/breast-cancer/treatment/treating-breast-cancer-during-pregnancy.html>
- Thompson, P., Stoeckl, A. T., Alberts, D. S., & Hess, L. M. (2008). Breast Cancer Prevention. In *Fundamentals of Cancer Prevention* (pp. 347–385). [https://doi.org/10.1007/978-3-540-88986-7\\_14](https://doi.org/10.1007/978-3-540-88986-7_14)



MAMMOGRAPHY  
EDUCATORS